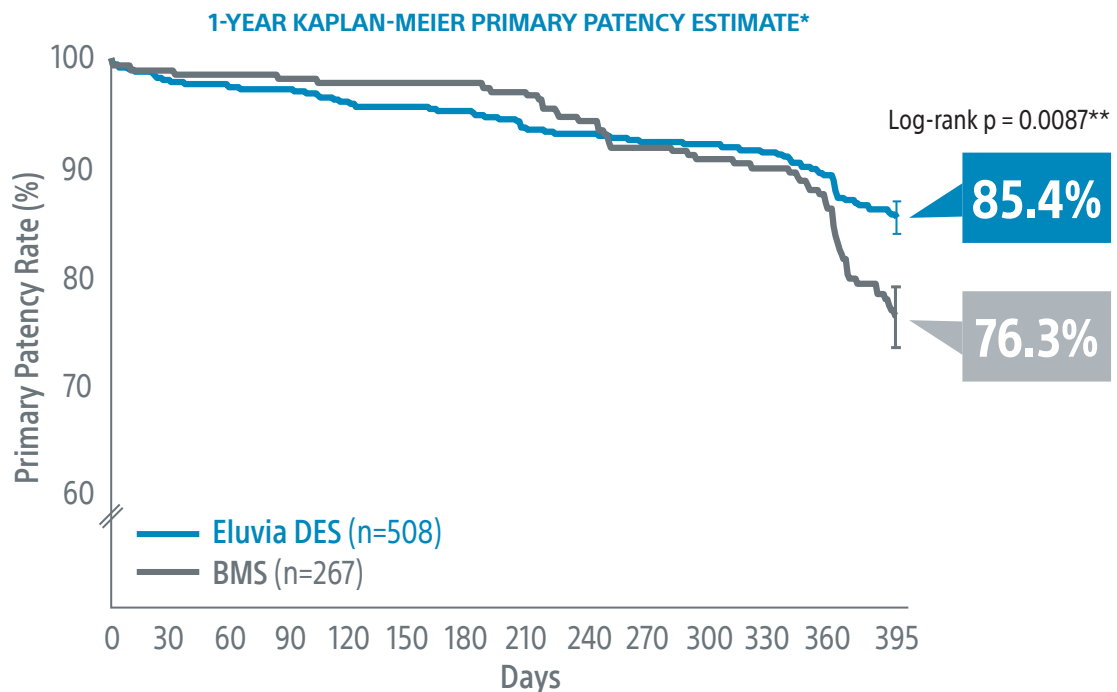


EMINENT CLINICAL TRIAL¹

EMINENT is the largest randomised controlled trial (2:1) comparing Eluvia™ Drug-Eluting Vascular Stent System to self-expanding bare metal stents (BMS) for SFA/PPA EU multi-centre; superiority trial; core lab adjudicated

SUPERIOR EFFECTIVENESS:

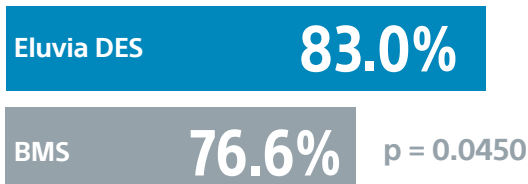
Eluvia demonstrated **superiority over BMS²** with a **statistically significant primary patency** of **85.4% versus 76.3%** through 1-Year



SUSTAINED CLINICAL IMPROVEMENT:

Eluvia demonstrated a **statistically significant greater rate of sustained clinical improvement** without reintervention over BMS through 1-Year

1-YEAR PRIMARY SUSTAINED CLINICAL IMPROVEMENT***



*Kaplan-Meier Estimate: Primary patency defined as core-lab assessed duplex ultrasound peak systolic velocity ratio (PSVR) ≤ 2.4 at 1-year in the absence of clinically-driven TLR or bypass of the target lesion.

**Log-rank p-value compares the entire K-M curves from time point zero to day 395 (full 1-year follow-up window)

***In EMINENT, primary sustained clinical improvement was defined as an improvement (decrease) by at least 1 Rutherford category, without TLR.

1. EMINENT RCT 1-Year results presented by Yann Gouéffic, MD. VIVA 2021

2. EMINENT Trial: A global randomized controlled multi-center trial with 2:1 randomization of the Eluvia™ Drug-Eluting Stent against commercially-available Self-Expanding Bare Nitinol Stents, single-blind, superiority design; independent core lab adjudication. 1-Year Binary Primary Patency rate of 83.2% in the Eluvia arm vs. 74.3% in the Bare-Metal Stenting arm (p-value = 0.0077).

EMINENT TRIAL DETAILS:

- 775 (RCT 2:1) patients across 58 centers in 10 European countries
- Rutherford category 2, 3, or 4
- Degree of stenosis $\geq 70\%$ (visual angiographic assessment)
- Vessel diameter ≥ 4 mm and ≤ 6 mm
- Total lesion length ≥ 30 mm and ≤ 210 mm

BASELINE CHARACTERISTICS	ELUVIA DES (n=508)	CONTROL (n=267)	p-value
Age (Years)	68.9 \pm 8.7	68.9 \pm 9.1	0.9739
Male Gender	71.5%	67.4%	0.2431
Diabetes Mellitus (medically-treated)	31.9%	32.6%	0.8440
History of Smoking (Current/Previous)	36.0%/39.6%	36.0%/41.6%	0.9849/0.5884
Percent Stenosis (%)	86.6 \pm 15.2	85.5 \pm 15.3	0.3629
Total Occlusions	42.3%	39.9%	0.5372
Total Stented Length (mm)	105.8 \pm 48.4	109.2 \pm 49.8	0.3858
Target Lesion Length (mm)	75.6 \pm 50.3	72.2 \pm 47.0	0.3815
Moderately Calcified	21.6%	26.0%	0.1849
Severely Calcified	30.3%	31.1%	0.8122

CONTROL STENT USAGE (n=294)

- **22.4%** - **Innova™** Vascular Self-Expanding Stent (Boston Scientific)
- **17.3%** - **Supera™** Peripheral Stent (Abbott)
- **16.0%** - **LifeStent™** Vascular Stent (Bard)
- **15.6%** - **EverFlex™** Self-Expanding Peripheral Stent (Covidien/Medtronic)
- **12.6%** - **S.M.A.R.T.®** Flex Vascular Stent and **S.M.A.R.T. CONTROL®** Vascular Stent (Cordis/Cardinal)
- **4.8%** - **Pulsar®-18** (Biotronik)
- **4.1%** - **Complete® SE** Vascular Stent (Medtronic)
- **0.0%** - **Misago®** Self-Expanding Peripheral Stent (Terumo)
- **7.1%** - Other

1-YEAR SAFETY RESULTS

No significant differences in Major Adverse Event (MAE) rates or All-Cause Death between **patients treated with Eluvia DES vs. BMS** through 1-Year.

	ELUVIA DES (n=492)	BMS (n=273)	p-value
All Death, Major Amputation, TLR	11.8% (56/474)	11.8% (31/263)	0.9912
All-Cause Death at 12 Months	2.7% (13/474)	1.1% (3/263)	0.1528
Target Limb Major Amputation	0.2% (1/474)	0.0% (0/263)	1.0000
Clinically-Driven Target Lesion Revascularization	8.4% (40/474)	10.6% (28/263)	0.3212

**Boston
Scientific**

Advancing science for life™

Peripheral Interventions

www.bostonscientific.eu

© 2021 Boston Scientific Corporation or its affiliates. All rights reserved.

PI-1139102-AA

ELUVIA DRUG-ELUTING VASCULAR STENT SYSTEM

CAUTION: The law restricts these devices to sale by or on the order of a physician. Indications, contraindications, warnings and instructions for use can be found in the product labelling supplied with each device. Products shown for INFORMATION purposes only and may not be approved or for sale in certain countries. This material is not intended for use in France. Results from different clinical investigations are not directly comparable. Information provided for educational purposes only.

Eluvia is a registered or unregistered trademark of Boston Scientific Corporation or its affiliates. All other trademarks are property of their respective owners.